

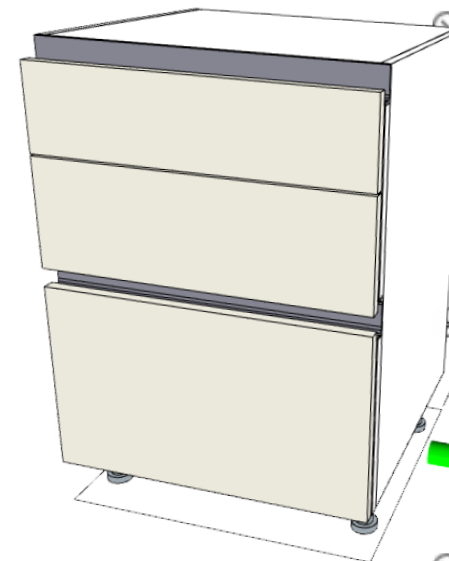
pCon

Installation
and activation
process



Configurable data

- Contains **intelligent information** allowing a considerable increase in work efficiency and quality
 - 2D + 3D geometries
 - materials
 - descriptions
 - prices
 - configuration rules



Module	
Type	Base unit
Shape	Linear
Front	Open
Base	Feet

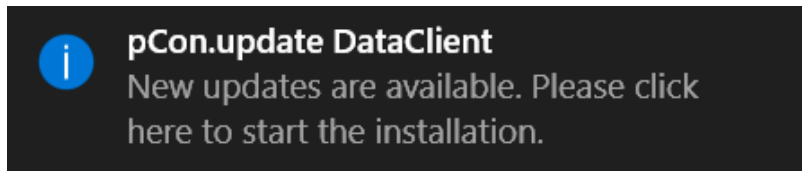
Measures	
Width	600
Height	780
Depth	570
Total Height	880
Special Measures	No

Body	
Material Body Type	Laminate
Body Finish	RGB 255-255-255
Material Shelf Type	Laminate
Shelf Finish	RGB 255-255-255

Price	
Price	0.00

Benefits

- Configurable data dramatically reduces the **time** and **cost** to create interior design projects
- Quotation with personalized images one click away
- Eliminate errors while specifying products
- **Automatic notification** when data updates are available



- Free solution for professional users

If you have problems or questions about
this process please contact us

contatto@easterngraphics.com

+39.051.587.5509

(1) Register

- Use the following link
<http://update.easterngraphics.com/registration/SEIT50>
- Fill all the fields
 - Registrations with false or incomplete information will be denied
 - Independent professionals should insert in the field **Company** their professional title



LOG IN	REGISTER	MANUFACTURERS	SUPPORT
Register on pCon.update		Please insert your personal information.	
▶ Insert personal information		User name	<input type="text"/>
Confirm e-mail address		Password	<input type="password"/> At least 6 characters
Activation of user account		Repeat password	<input type="password"/>
Select manufacturers		Company	<input type="text"/>
Download software		Title	<input type="text"/> Mr.
		First name	<input type="text"/>
		Last name	<input type="text"/>
		Street address	<input type="text"/>
		Zip code	<input type="text"/>
		City	<input type="text"/>
		Country	<input type="text"/> Italy
		E-mail address	<input type="text"/>
		Phone number	<input type="text"/>
		Language	<input type="text"/> English
		Profession	<input type="checkbox"/> Manufacturer <input type="checkbox"/> Designer <input type="checkbox"/> Distributor <input type="checkbox"/> Agent

(2) Confirm identity

- After the registration you'll receive an email to confirm your identity
- With a [click on the activation link](#) you'll send a request to activate the account



Dear Mr. Easterngraphics

Thank you for your registration on pCon.update.

To continue with your registration, please confirm your e-mail address.



[Confirm e-mail address](#)

This confirmation process is necessary to make sure that the e-mail you entered is correct. If you have not activated this service, please ignore this e-mail.

(3) Account approval

- You'll **receive another email** when your account has been approved. It's possible that the activation process is not immediate.
- From this moment on you'll have access to the pCon.update portal



Dear Mr. Easterngraphics

Your pCon.update account with the user name Eastergraphics Southern Europe has been activated.



Continue registration

(4) Access the pCon.update portal

- With the username and password created during the registration process you can access the portal update.easterngraphics.com
- In the **Profile** section you can change or update information regarding your account

pCon UPDATE | EasternGraphics
visualize your business

LOG IN REGISTER MANUFACTURERS SUPPORT

Welcome

pCon.update is the leading platform for getting configurable product data in **OFML format** from more than 100 manufacturers. Combine OFML data and **pCon.planner** for uncomplicated room planning, 3D product configuration as well as for the creation of offers and quotations.

Login

User name

Password

Log in [Forgot your password?](#)

Following your registration, pCon.update will provide access to product data of a multitude of manufacturers. T

ophelis FAMO denz Alias bma rohde & GRAF

(5) Request data

- Select the manufacturers to which you wish to request configurable data by clicking on **Subscribe**
- Click on the manufacturer logo to get further information

NEW Request the high quality generic kitchen and living libraries with thousands of configurable products

The screenshot shows a user interface for selecting manufacturers. At the top, there are controls for 'Sorting: Alphabetical' and 'Filter'. Below this is a grid of manufacturer cards. Each card displays the manufacturer's logo, name, and a subscription status. The 'Subscribe' button is highlighted in blue for manufacturers that are not yet subscribed to, while it is grey for those that are. The grid contains the following manufacturers:

Manufacturer	Subscription Status
about OFFICE	Subscribed
acousticpearls	Subscribed
ACTIU	Subscribed
aeris	Not Subscribed
AOS	Not Subscribed
Allermuir	Not Subscribed
AMS	Not Subscribed
Andreu World	Subscribed
arper	Subscribed
ASSMANN	Not Subscribed
bene	Subscribed
bigla	Not Subscribed
bimos	Not Subscribed
BISLEY	Not Subscribed
bma	Not Subscribed

(6) Data access notification

- You'll **receive an email** when the manufacturer has approved your access to their data
- The time necessary for the approval of the data depends on each manufacturer



Dear Mr. Easterngraphics

 Your subscription to **EasternGraphics s.r.l.** has been activated.

You can now use the pCon.update DataClient to download the content provided by EasternGraphics s.r.l..

(7) Download and install DataClient

- It's necessary to install **pCon.update DataClient** to be able to download pCon.planner ME and the configurable data
- It will maintain your data and all pCon applications always up to date
- In the pCon.update portal, go to **Support** section and download pCon.update DataClient





MANUFACTURERS ACCOUNT SUPPORT

pCon.update DataClient Standard (required)
Free version

In order to use pCon.update, you will need the pCon.update DataClient. The DataClient serves to install and to update OFML data as well as pCon applications on your system.

- Size: 24 MB
- Languages: EN, DE, FR, ES, IT, NL, PT, PL
- Operating systems: Windows Vista / 7 / 8 / 10 (32-bit or 64-bit)

 [Download](#) 

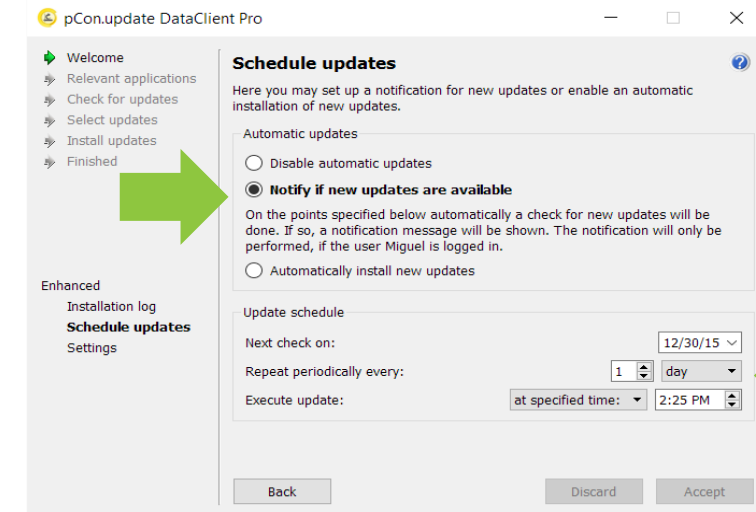
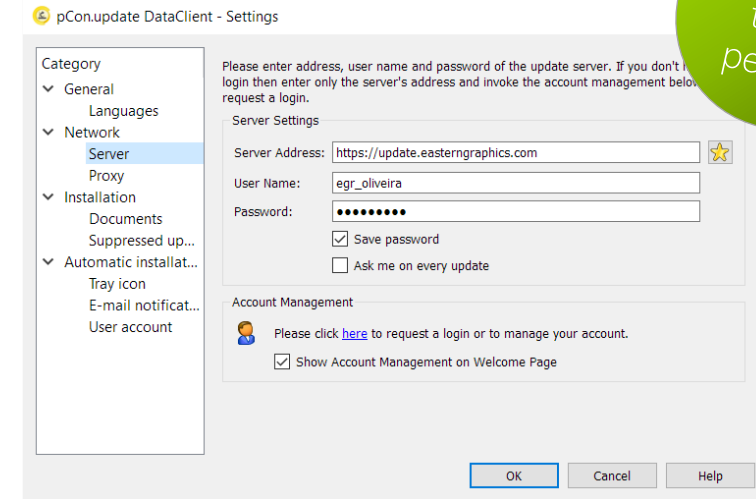
(8) DataClient initial setup

Access configuration

- Server address: `http://update.easterngraphics.com`
- User name: defined during registration
- Password: defined during registration
- Activate 'Save password'

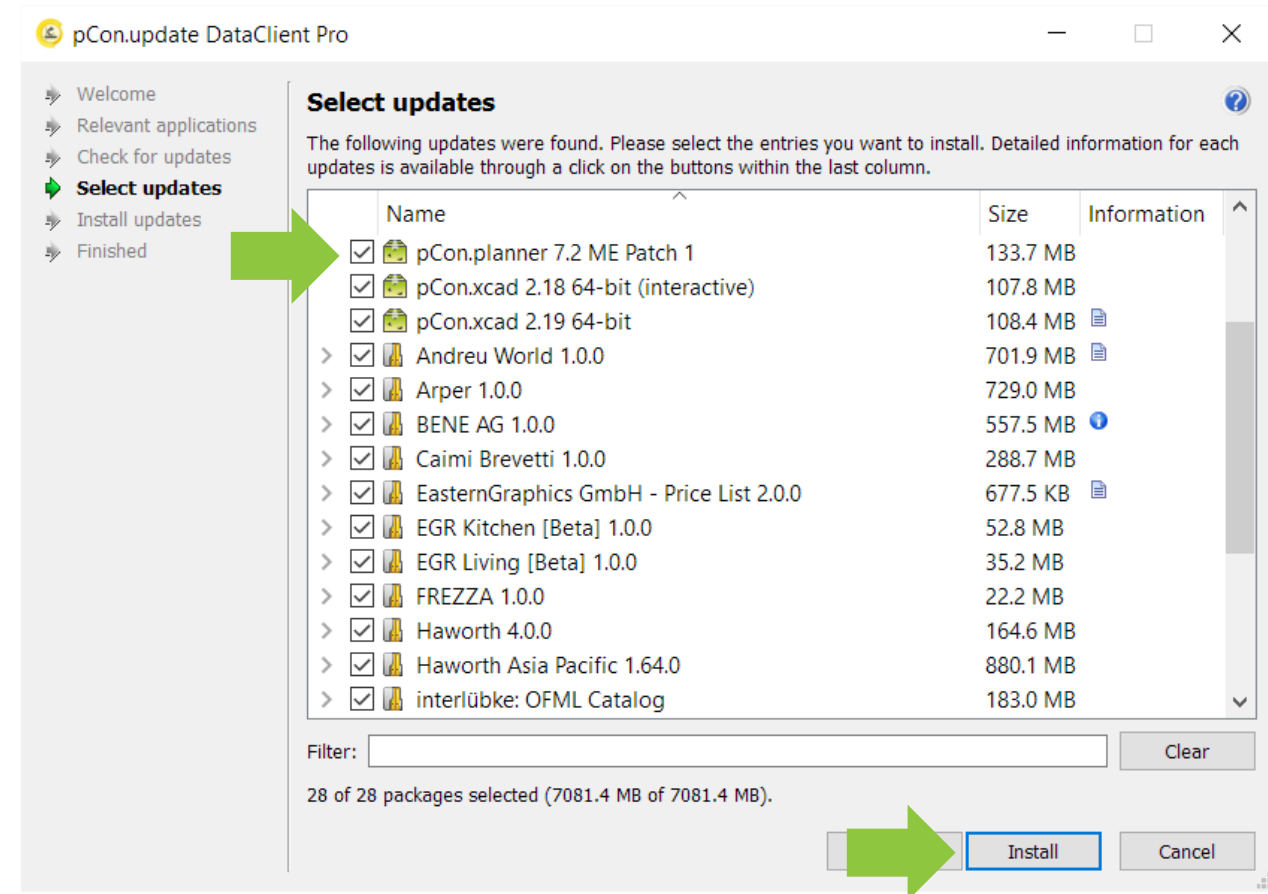
Schedule updates

- Select the option 'Notify if new updates are available' and set the 'Repeat periodically every' to 'day'
- When new updates are available an automatic notification will be visible



(9) Install pCon.planner ME

- It's necessary to have installed pCon.planner ME or PRO to process configurable data. The STD version available on our site is not compatible with this type of data
- pCon.planner ME will show up in the window of the available updates
- Click **Install**



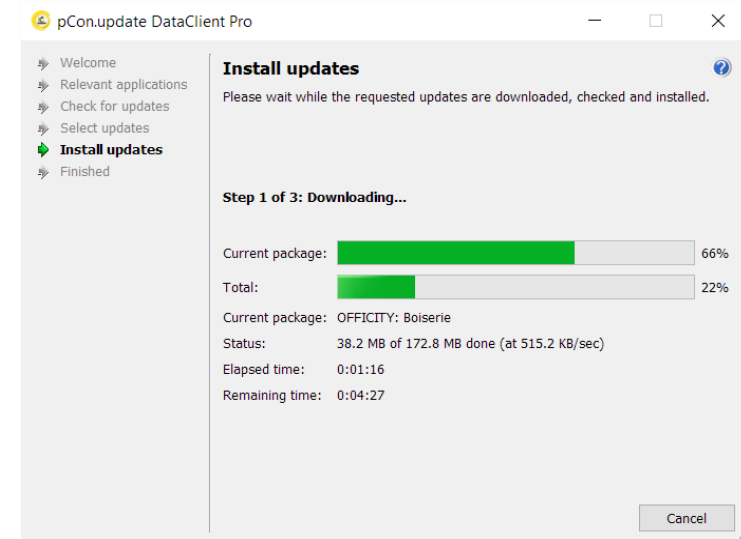
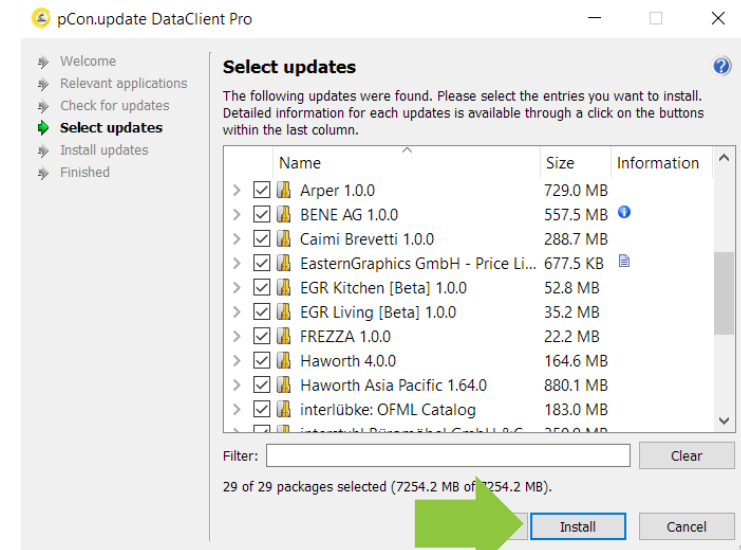
(10) Install/update data

Select updates

- We recommend that you always update all data and applications visible in the list

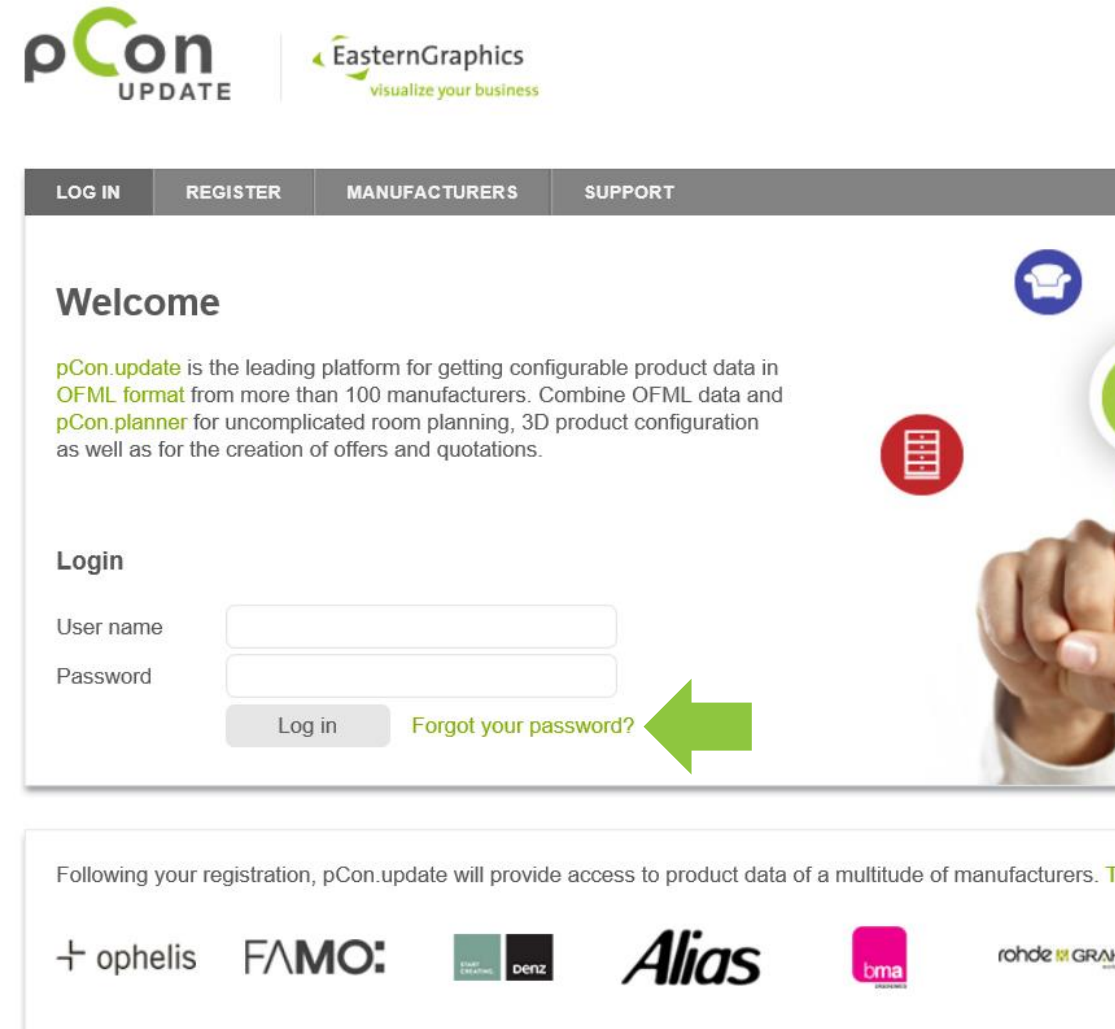
Install updates

- After selecting the modules to update, the data and applications will be downloaded and installed



(11) Forgot the password?

- If you forget your access password to pCon.update, you can easily recover it
- Go to the pCon.update portal and click on [Forgot your password?](#) link
- Insert the email address used for the registration and follow the simple steps



The screenshot shows the pCon.update website interface. At the top left is the pCon UPDATE logo, and at the top right is the EasternGraphics logo with the tagline 'visualize your business'. Below the logos is a navigation bar with links for LOG IN, REGISTER, MANUFACTURERS, and SUPPORT. The main content area features a 'Welcome' section with a brief description of the platform's capabilities. Below this is a 'Login' section with input fields for 'User name' and 'Password', a 'Log in' button, and a 'Forgot your password?' link. A large green arrow points to the 'Forgot your password?' link. At the bottom of the page, there is a footer with logos for various manufacturers: ophelis, FAMO, denz, Alias, bma, and rohde & GRAF.