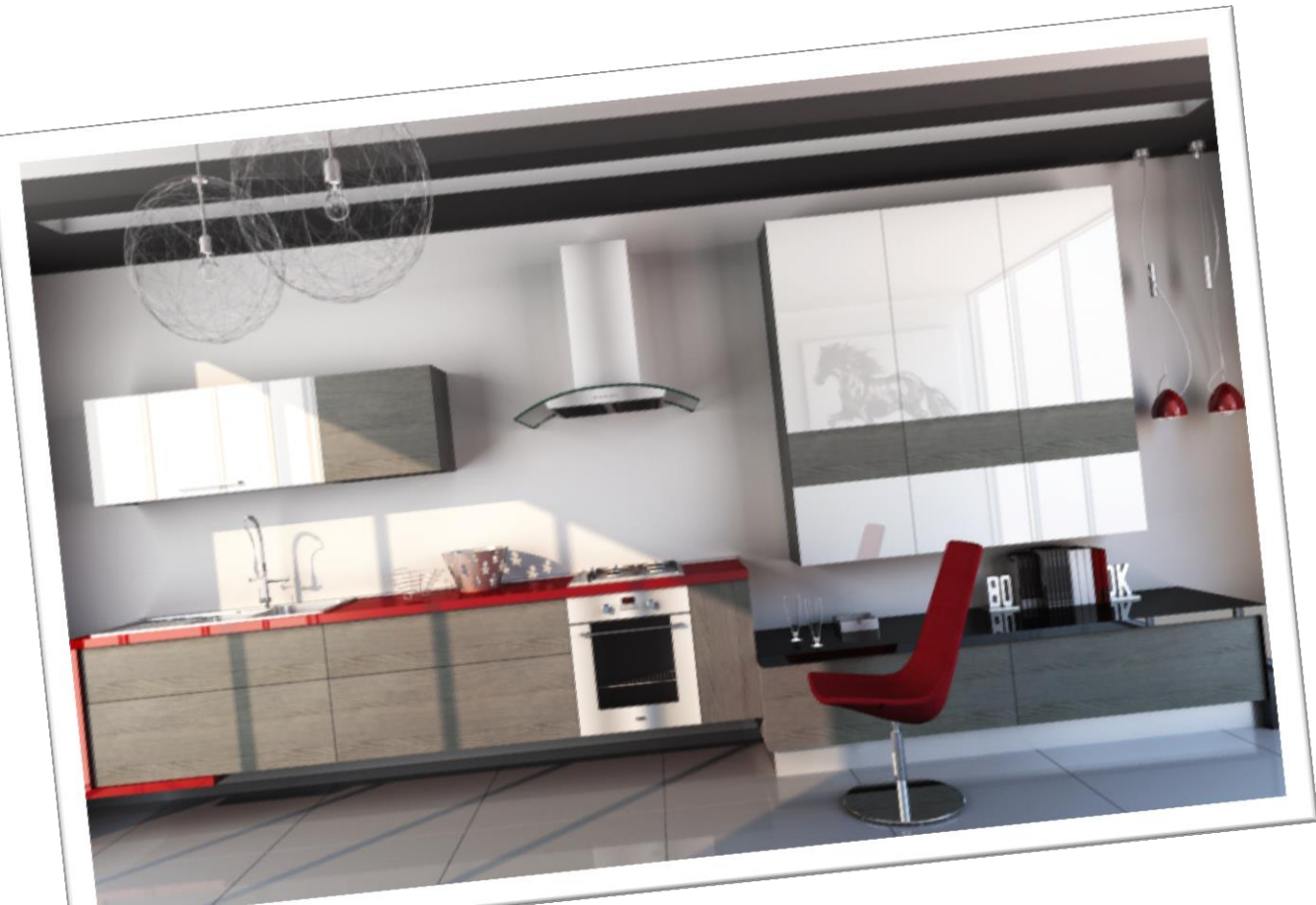


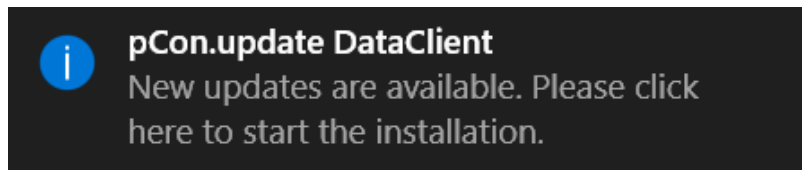
pCon

Installation
and activation
process



Configurable data

- Configurable data dramatically reduces the **time** and **cost** to create interior design projects
- **Quotation** with personalized images one click away
- **Eliminate errors** while specifying products
- **Automatic notification** when data updates are available



- Free solution for professional users

I don't have a login for pCon.update

You can **sign up for the free marketing version** of pCon.update. Once you signed up, the Manufacturer data will be made available to you. Follow the instructions in this presentation for a step-by-step guide.

Please note: If you have several manufacturers using OFML data you can subscribe to the pCon.update service to manage data from different manufacturers with a single profile. Get more information via the local partner at www.easterngraphics.com/en/international.html

I'm already a subscriber of pCon.update

If you already pay the monthly subscription of pCon.update, simply request the data via the pCon.update portal and download the Manufacturer data through your existing installation of pCon.update DataClient. Once you've installed the data, start pCon.planner to use it! **You can close this presentation.**

(1) Install pCon.planner ME

- If you still don't have pCon.planner ME, download and install it. Otherwise you can jump this step.
- The version pCon.planner STD available on our web site is not compatible with configurable data – you have to install the ME version.
- Download pCon.planner ME and pCon.update DataClient from this link:
 - http://ftp.easterngraphics.com/egr_download/static/pCon/planner/p-pl-x 7.3p1 me setup.zip
 - http://ftp.easterngraphics.com/egr_download/static/pCon/update/p-ud dc 1.9.1p1 setup.zip
- If the link is not valid please contact the local partner for a valid link

(2) Register

- Use the following link
<https://update.easterngraphics.com/registration/KAEN29>
- Fill all the fields
 - Independent professionals should insert in the field **Company** their professional title



LOG IN	REGISTER	MANUFACTURERS	SUPPORT
Register on pCon.update		Please insert your personal information.	
▶ Insert personal information		User name	<input type="text"/>
Confirm e-mail address	Activation of user account	Password	<input type="password"/> At least 6 characters
Select manufacturers	Download software	Repeat password	<input type="password"/>
		Company	<input type="text"/>
		Title	Mr. <input type="text"/>
		First name	<input type="text"/>
		Last name	<input type="text"/>
		Street address	<input type="text"/>
		Zip code	<input type="text"/>
		City	<input type="text"/>
		Country	Italy <input type="text"/>
		E-mail address	<input type="text"/>
		Phone number	<input type="text"/>
		Language	English <input type="text"/>
		Profession	<input type="checkbox"/> Manufacturer <input type="checkbox"/> Designer <input type="checkbox"/> Distributor <input type="checkbox"/> Agent <input type="checkbox"/> ... <input type="checkbox"/> ...

(3) Confirm identity

- After the registration you'll receive an email to confirm your identity
- With a [click on the activation link](#) you'll send a request to activate the account



Dear Mr. Easterngraphics

Thank you for your registration on pCon.update.

To continue with your registration, please confirm your e-mail address.



Confirm e-mail address

This confirmation process is necessary to make sure that the e-mail you entered is correct. If you have not activated this service, please ignore this e-mail.

(4) Account approval

- You'll **receive another email** when your account has been approved. It's possible that the activation process is not immediate.
- From this moment on you'll have access to the pCon.update portal



Dear Mr. Easterngraphics

Your pCon.update account with the user name Eastergraphics Southern Europe has been activated.

[Continue registration](#)



(5) Access the pCon.update portal

- With the username and password created during the registration process you can access the portal update.easterngraphics.com
- In the **Profile** section you can change or update information regarding your account

pCon UPDATE | EasternGraphics
visualize your business

LOG IN REGISTER MANUFACTURERS SUPPORT

Welcome

pCon.update is the leading platform for getting configurable product data in **OFML format** from more than 100 manufacturers. Combine OFML data and **pCon.planner** for uncomplicated room planning, 3D product configuration as well as for the creation of offers and quotations.

Login

User name

Password

Log in [Forgot your password?](#)

Following your registration, pCon.update will provide access to product data of a multitude of manufacturers. T

ophelis FAMO denz Alias bma rohde & GRAF

(6) Data access notification

- You'll **receive an email** when the manufacturer has approved your access to their data
- The time necessary for the approval of the data depends on each manufacturer



Dear Mr. Easterngraphics

 Your subscription to **EasternGraphics s.r.l.** has been activated.

You can now use the pCon.update DataClient to download the content provided by EasternGraphics s.r.l..

(7) Download and install DataClient

- It's necessary to install **pCon.update DataClient** to be able to download pCon.planner ME and the configurable data
- It will maintain your data and all pCon applications always up to date
- In the pCon.update portal, go to **Support** section and download pCon.update DataClient





MANUFACTURERS ACCOUNT SUPPORT

pCon.update DataClient Standard (required)
Free version

In order to use pCon.update, you will need the pCon.update DataClient. The DataClient serves to install and to update OFML data as well as pCon applications on your system.

- Size: 24 MB
- Languages: EN, DE, FR, ES, IT, NL, PT, PL
- Operating systems: Windows Vista / 7 / 8 / 10 (32-bit or 64-bit)

 [Download](#) 

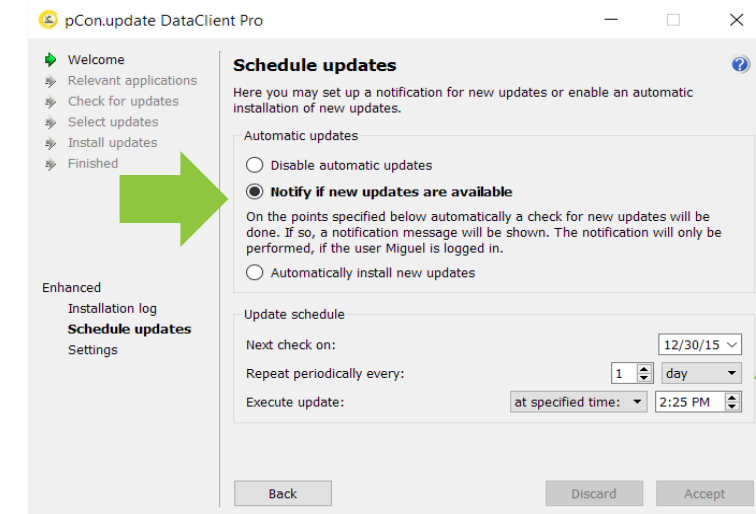
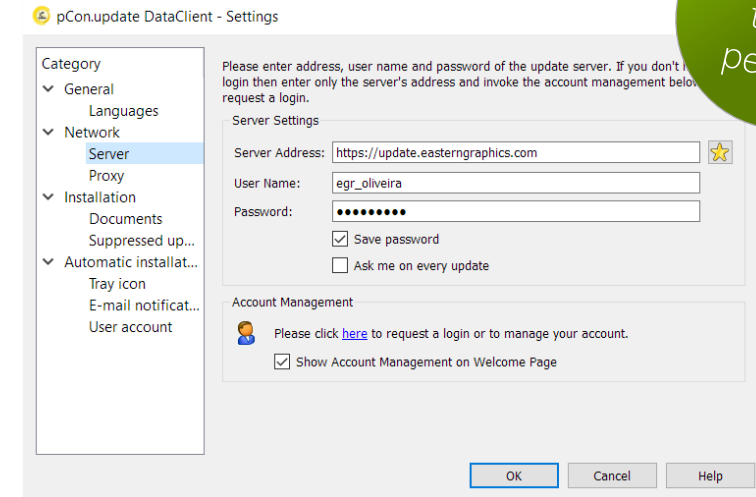
(8) DataClient initial setup

Access configuration

- Server address: `http://update.easterngraphics.com`
- User name: defined during registration
- Password: defined during registration
- Activate 'Save password'

Schedule updates

- Select the option 'Notify if new updates are available' and set the 'Repeat periodically every' to 'day'
- When new updates are available an automatic notification will be visible



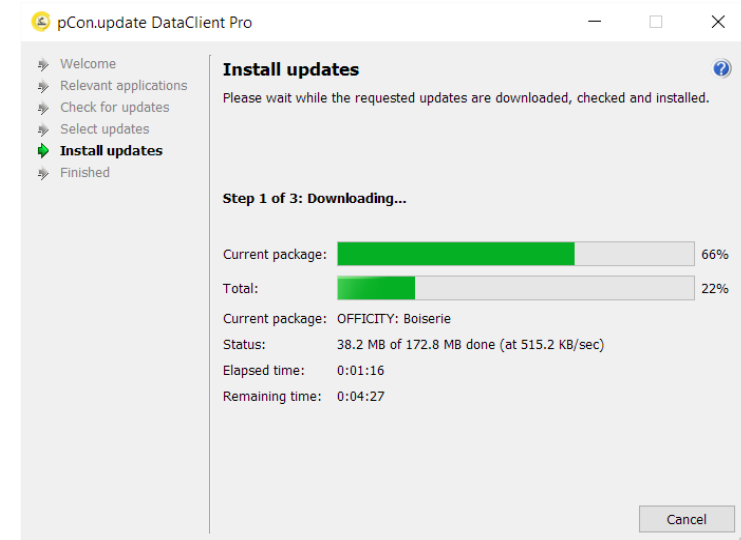
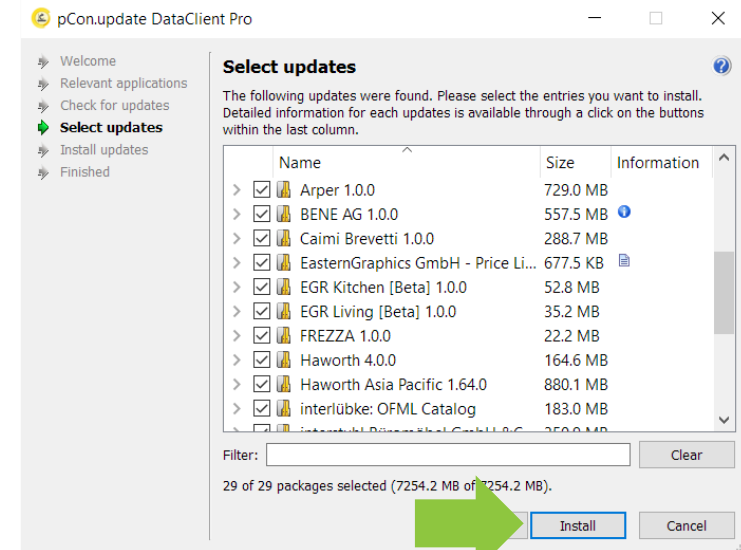
(9) Install/update data

Select updates

- We recommend that you always update all data and applications visible in the list

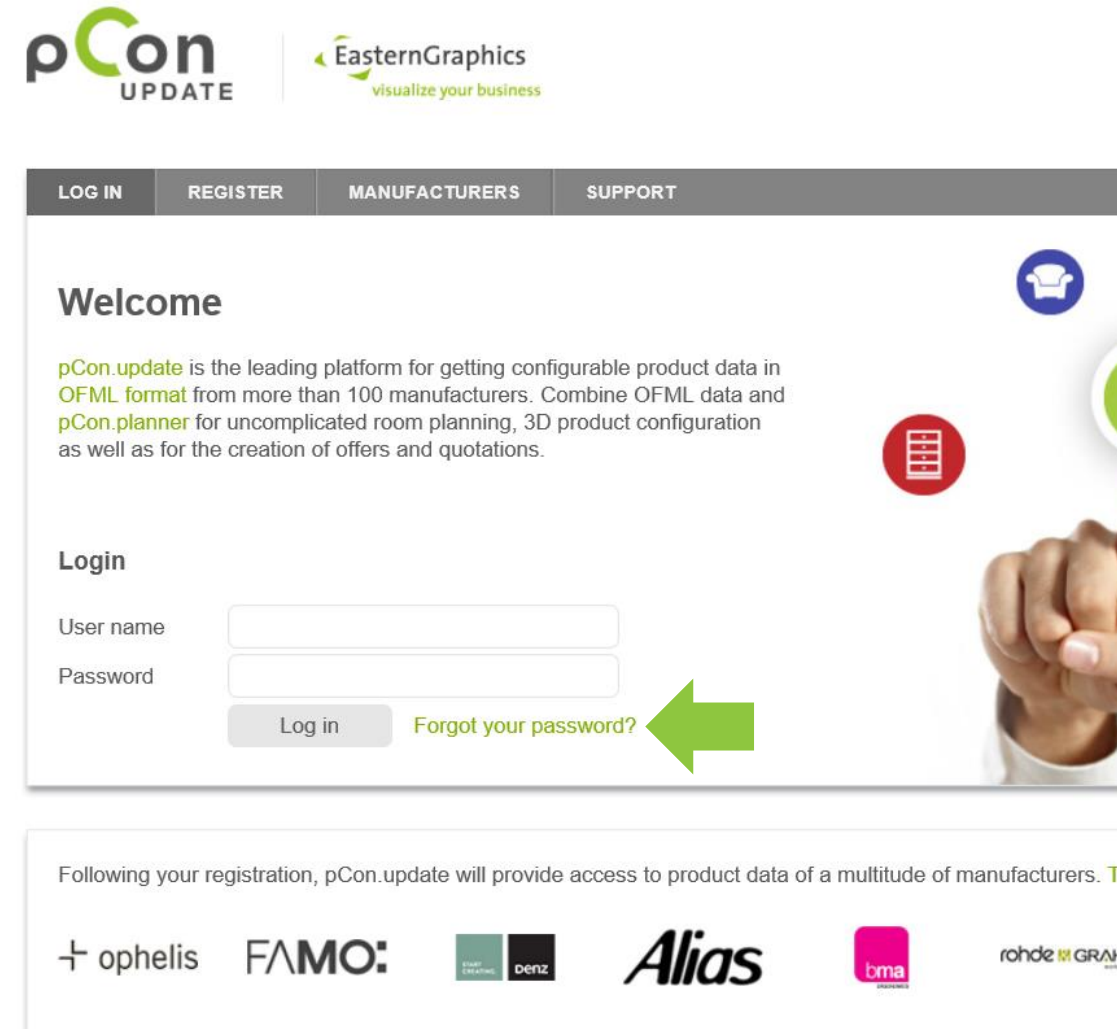
Install updates

- After selecting the modules to update, the data and applications will be downloaded and installed



(10) Forgot the password?

- If you forget your access password to pCon.update, you can easily recover it
- Go to the pCon.update portal and click on [Forgot your password?](#) link
- Insert the email address used for the registration and follow the simple steps



The screenshot shows the pCon.update website interface. At the top, there are logos for pCon UPDATE and EasternGraphics. Below the logos is a navigation bar with links for LOG IN, REGISTER, MANUFACTURERS, and SUPPORT. The main content area features a 'Welcome' section with a brief description of the platform. Below this is a 'Login' section with input fields for 'User name' and 'Password', a 'Log in' button, and a 'Forgot your password?' link. A green arrow points to the 'Forgot your password?' link. At the bottom of the page, there is a footer with logos for various manufacturers including ophelis, FAMO, denz, Alias, bma, and rohde & GRAF.